

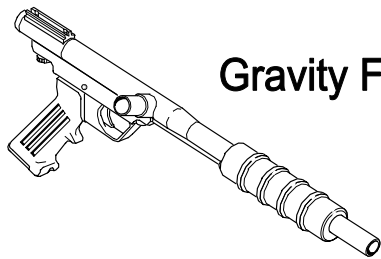


User's Manual

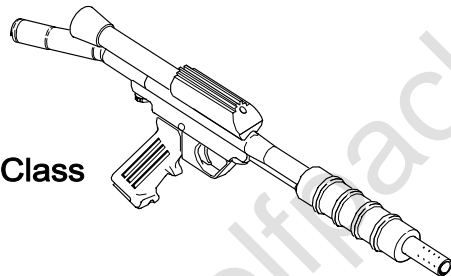
Paintball Gun

User's Manual

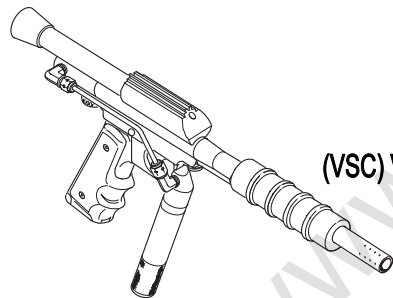
Component Concepts, Inc.
The Phantom™ Paintball
Gun User's Manual



Gravity Feed



(SC) Stock Class



(VSC) Vertical Stock Class

The information in this manual is subject to change without notice and does not represent a commitment on the part of Component Concepts, Inc. CCI reserves the right to make improvements to products without incurring any obligation to incorporate such improvements in products previously sold.

This manual contains information protected by copyright. No part of this manual may be photocopied or reproduced in any form without prior written consent from Component Concepts, Inc.

Copyright© 1989-2002 by Component Concepts, Inc.
All rights are reserved.

The PHANTOM™ is a registered trademark of
Component Concepts, Inc.

Precautions

Safety-Your Responsibility..... 1

Description and Operation

Introduction 2
Specifications 3
The Gun Safety 3
CO₂ Installation 4
Puncture Adapter Removal..... 4
Load and Fire Paintballs 5
Velocity Adjustment 6

Service and Maintenance

Field Stripping 7
Cup Seal and O-ring Replacement..... 8
General Maintenance..... 8
Service Notes..... 10
Parts List 12
Exploded View 13
Accessories..... 14

Warranty and Disclaimers

Warranty 15
Disclaimers 16

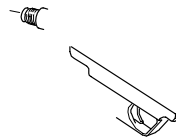
www.WolfpackPaintballTeam.com

www.WolfpackPaintballTeam.com

CO₂ Installation

Stock

Place 12 gram CO₂ cartridge in stock housing. Screw stock housing with cartridge onto puncture adapter. This action pierces cartridge and pressurizes gun.



Puncture Adapter Removal

ethr(ah)5do

www.Wolfpa

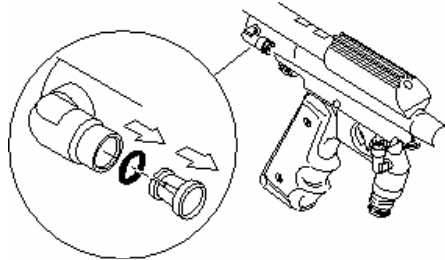
Cup Seal and O-ring Replacement

An extra O-ring and cup seal has been supplied to help you

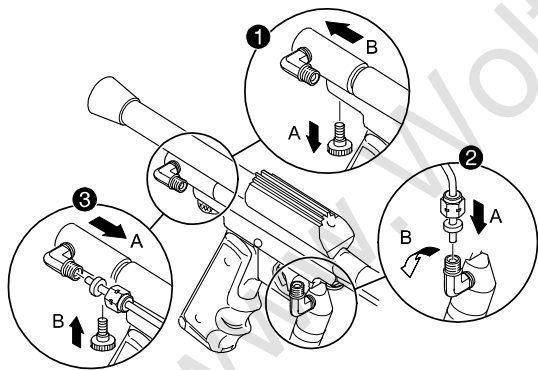
www.WolfpackPaintballTeam.com

Service Notes

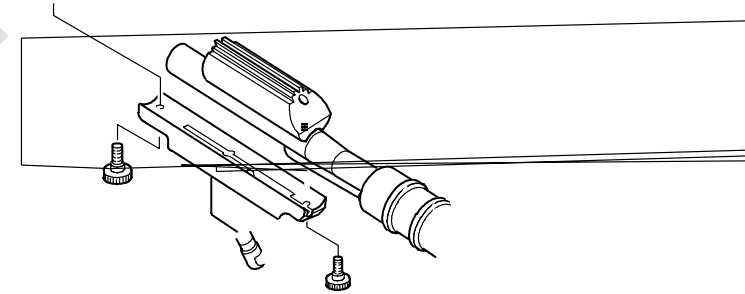
If your fitting should leak the internal O-ring in the fitting needs to be replaced. De gas the marker. Remove the tube by pushing in the collet and pulling the tube out. If you have a metal type tube you also need to remove the rear thumb screw. Pull and wiggle the collet back and forth to extract from fitting body. Replace the O-ring. (#9428)



Compression metal line assembly is the newest type vertical air connection and requires a 7/16 wrench for disassembly. The rubber sleeve is designed for positive seal with proper compression.



Service Notes



Item #	Part#	Description				
15	9115	Retainer				
16	9103	Power Tube, Modified Short				
17	9116	Power Tube Assembly, Modified				
18	9062	Anti-Kink Hammer Assembly				
19	9051	Main Spring				
20	9052	Tuned Port Compensator				
21	9045	Bolt (21A, 14)				
21A	9049	Nylon SeTc 0.001 Usmbwed 1d Po0-32bxn Se1/8M20	9045	Bolt (21A,15(bl)-19(y)12(,)-15, 1uPm)0 -1.15 Tc 0.00.155 TD498	20	9062

www.WolfpackPaintballTeam.com

Accessories

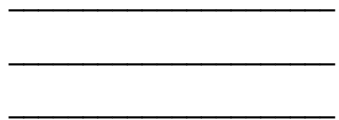
www.WolfpackPaintballTeam.com

Disclaimers

This limited warranty does not extend to any products not purchased from Component Concepts, Inc. (CCI) or an

www.WolfpackPaintballTeam.com

www.wolfpackpaintballteam.com



PLACE
NECESSARY
POSTAGE
HERE

Component Concepts, Inc.
530 South Springbrook Road
Newberg, OR 97132

