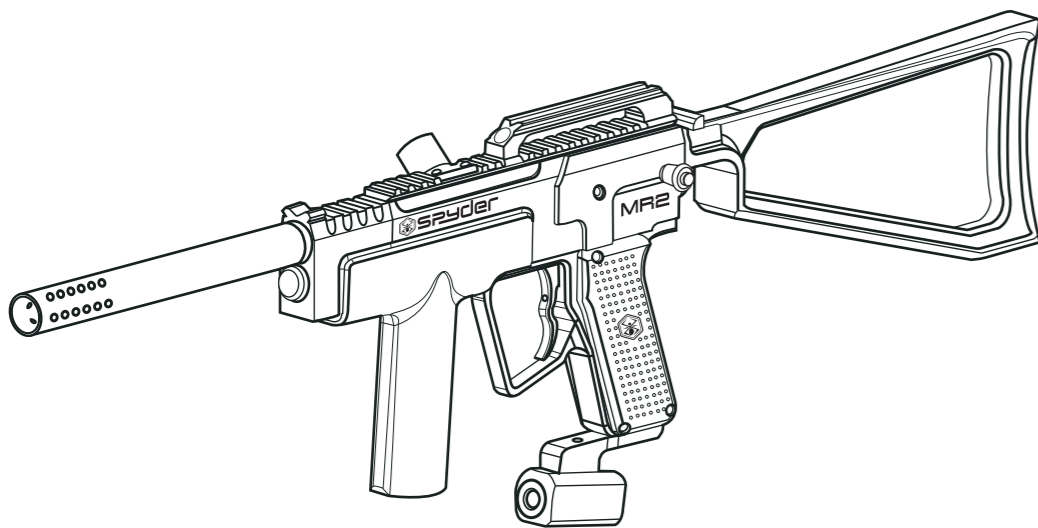
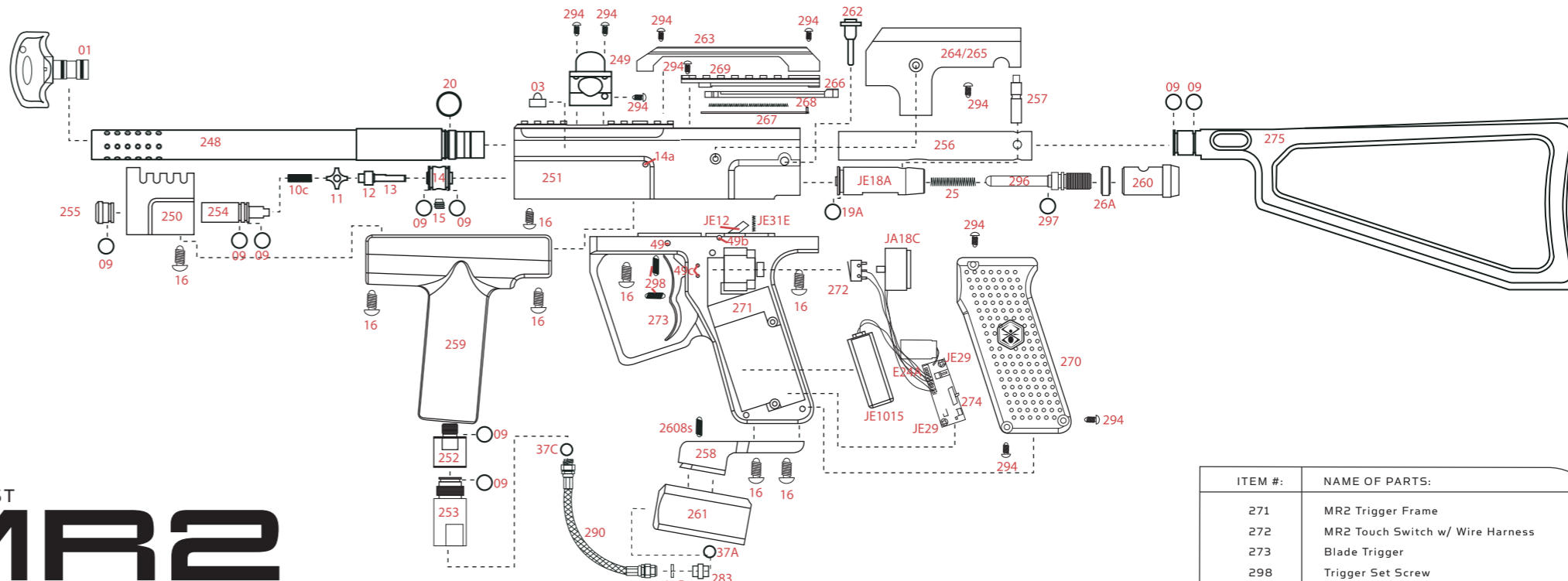


SPYDER MR2



!CAUTION!

- This paintball marker is NOT a toy. It can cause serious injury or death.
- Kingman recommends that customers be at least 18 years of age to purchase this product.
- Firmly install a barrel blocking device when marker is not in use.
- All persons using this product, or within range while this product is being used, must wear eye and face protection specifically designed for paintball.
- Never shoot a person who is not wearing proper protection.
- Treat every paintball marker as if it were loaded.
- Never look down the barrel of the marker.
- Keep the paintball marker on SAFE until ready to shoot.
- Always remove gas source before disassembly.
- Fire only 0.68 caliber paintballs from this product.
- Read this manual and air system warnings before using this product.
- Any modifications or tempering of original factory parts will void all warranties and liabilities from Kingman.
- Always make certain the bolt is in the un-cocked position when marker is not in use.
- Always put marker on SAFE when marker is not in use.
- Transfer this instruction manual upon change of marker ownership.



PARTS LIST

MR2

ITEM #:	NAME OF PARTS:	ITEM #:	NAME OF PARTS:	ITEM #:	NAME OF PARTS:
1	Barrel Plug	14	Valve Body	296	Velocity Adjuster w/ Spring Guide
248	MR1/MR2 12' Barrel	14A	Valve Body Roll Pin	297	Velocity Adjuster O-ring
3	Ball Stopper	15	Valve Body Screw	262	MR1/MR2 Quick Disconnect Pin
249	MR1/MR2 Feed Neck	294	MR1/MR2 M4 x 8 Screw w/ washer	25	Striker Spring
250	MR2 Shroud	16	M5 x 12 Screw w/washer	26A	Striker Buffer
251	MR2 Receiver	256	MR 2 Delrin ACS Bolt	263	MR2 Sight Rail
252	MR2 Vertical / C/A Plug	JE18A	Striker Bolt	264	MR2 Side Plate (Left)
253	MR2 Vertical / C/A to Hose Adapter	19A	Striker O-Ring	265	MR2 Side Plate (Right)
254	MR2 Reservoir Adapter Plug	20	Barrel O-ring	266	MR2 Snap T-Knob
255	MR2 Shroud Plug	257	MR2 Bolt Pin	267	MR2 Snap T-Clip
09	O-Ring #015 80D	258	MR1/MR2 2" Dovetail Drop Forward	268	MR2 Snap T-Spring
10C	Valve Spring	2608s	Drop Forward Lock Screw	269	MR2 Snap Rail Cover
11	Cup Seal Guide	259	MR2 Fore Grip Handle	290	Disconnect Hose 6.25" (black)
12	Cup Seal	260	MR1/MR2 Striker Plug	283	Male STD / Female Metric
13	Valve Pin	261	MR1/MR2 Dovetail Bottom-Line ASA	270	MR2 Grip Panels
				271	MR2 Trigger Frame
				272	MR2 Touch Switch w/ Wire Harness
				273	Blade Trigger
				298	Trigger Set Screw
				49*	Trigger Pin
				JE12	Sear
				JE31E	ESP Sear Spring
				49C	Touch Switch Roll Pins
				49B	Sear Roll Pin (Small)
				274	MR2 Circuit Board
				JE29	Circuit Board Screw
				JE18C	Coil Set
				JE18E*	Coil Set Screw
				E24A	Battery Harness
				275	MR1/MR2 Shoulder Stock
				JE1015	Java 9.6v Rechargeable Battery
				JE1024*	A/C Charger - 110 v
				276*	MR2 Parts Kit
				37B	Filter O-ring
				37C	Air Filter
				37D	Disconnect O-ring #011

* not pictured