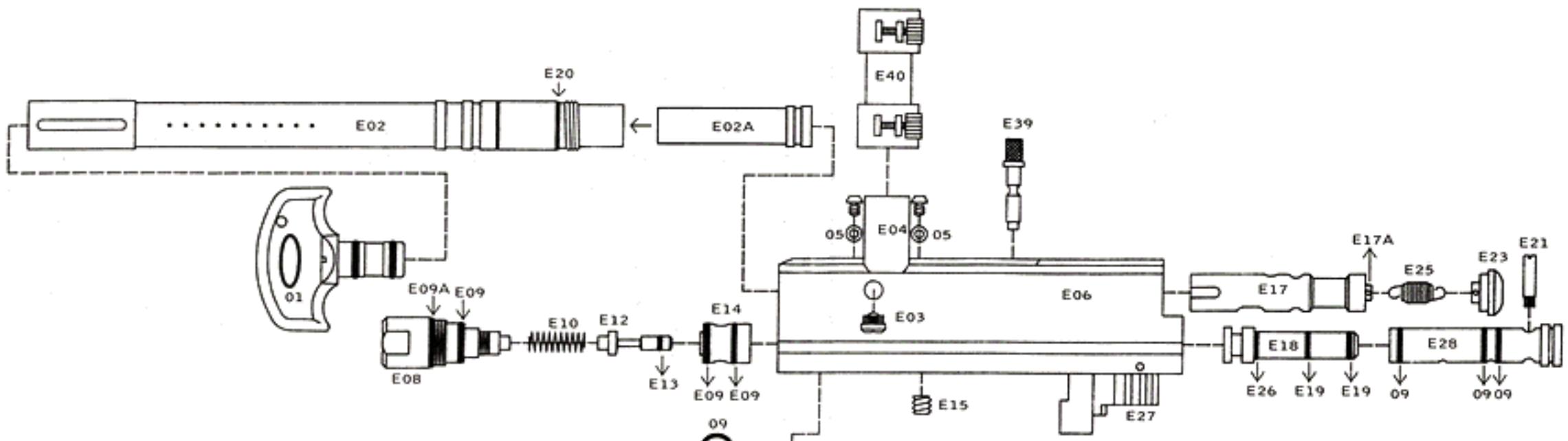


Spyder EM1



- E01 Barrel Plug
- E02 TRIO 12" Barrel
- E02A Barrel insert
- E03 Ball Stopper
- E04 Direct Feed
- E05 M4 X 6 Screw w/washer
- E06 EM1 Receiver
- E07 Vertical Adapter
- E08 Secondary Regulator
- E09 O-ring #015 80D
- E09A O-ring #16 80D
- E10 Valve Spring
- E11 EM1 Fore Grip
- E12 Cup Seal with Valve Pin
- E13 O-ring #06 70D
- E14 EM1 Valve Body
- E15 Valve Body Screw
- E16 M3.5 X 12 Screw/washer
- E17 Venturi Bolt

- E17A Retaining Screw
- E18 Stainless Hammer
- E19 Hammer O-ring(#012 80D)
- E20 Barrel O-ring
- E21 Pneumatic Cylinder Screw
- E23 Bolt Plug
- E25 Venturi Bolt Spring
- E26 Hammer Buffer O-ring (#013 70D)
- E27 Solenoid
- E27A Solenoid Screw
- E27B Solenoid Gasket
- E28 Pneumatic Cylinder
- E29 Circuit Board
- E30 LED Light Indicator
- E30A LED Light Indicator Ring
- E31 Trigger Frame
- E31A Solenoid Wire Harness
- E31B Trigger Shim

- E31C Trigger
- E31D Trigger Adjust Screw
- E32 Grip Cover
- E33 On/Off Screw (M2 X 6 Screw)
- E33A On/Off Switch
- E34 Battery Cap

- E34A Touch Switch
- E35 Regulator Adjust Screw
- E35A EM1 C/A Regulator
- E36 5/32" X 7/8" Screw w/washer
- E37 EM1 Micro-Lined Hose
- E39 Knurled Cocking Knob
- E40 Straight Elbow
- E41 Quick Release Micro-Lined Adapter
- E42 C/A Regulator Gauge