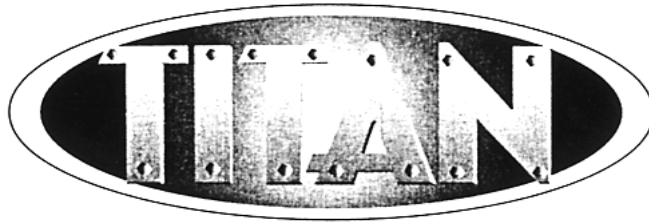


Owners's Manual



CO2 Powered Paintball Gun

Manufactured by

Mokal Inc.

1860 Sismet Road
Mississauga, Ontario Canada
L4W 1W9

The Titan is a gas operated semi-automatic paintball gun designed to shoot 0.68 caliber paintballs. Its simple and robust design will give you years of enjoyable use.

Caution!

**READ THIS OWNER'S MANUAL, THE WARNINGS
AND THE INSTRUCTIONS COMPLETELY
BEFORE OPERATING PAINTGUN!**

**CARELESS USE OR MISUSE OF PAINTGUN
CAN RESULT IN SERIOUS INJURY.**

INDEX

Table of Contents	Page
Warning/Safety/Liability Statement	1
General Components	2
Safety Features	2
1) Safety Pin on Handle	2
2) Uncock the Gun	2
3) Power Feed Plug	2
Schematic Drawing	3-5
Disassembly	6
Assembly	6
1) Valve Disassembly	7
2) Velocity Adjustment	7
3) Anti-double feeding mechanism	7
Troubleshooting	7 & 8

STATEMENT OF LIABILITY

This airgun is surrendered by Mokal Inc., with the express understanding that we assume no liability for its resale or safe handling. It can be considered as a dangerous weapon if handled, abused or tampered with. Mokal Inc. shall not be responsible for personal injury or loss of property or life resulting from the use of this airgun under any circumstances, including, but not limited to, the intentional, reckless, negligent or accidental discharges.

WARNING!

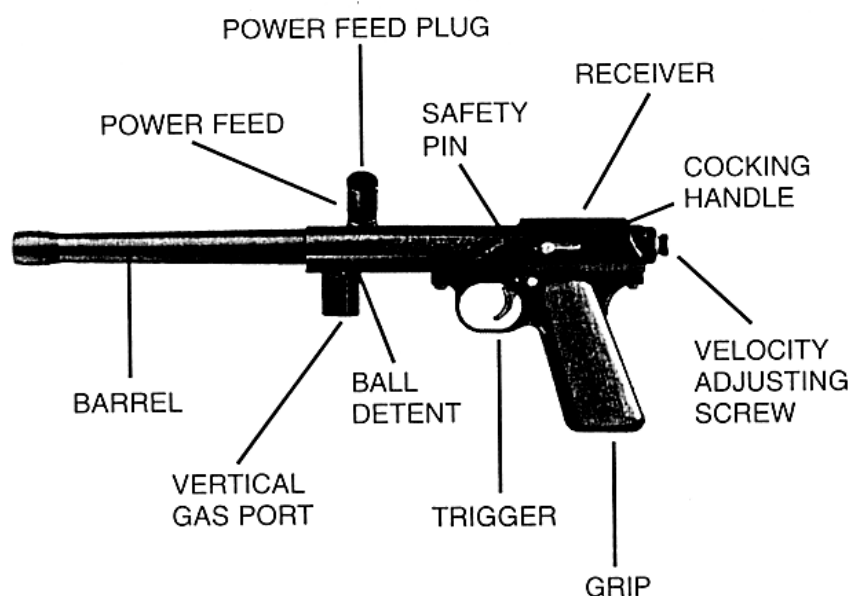
THIS PAINTBALL GUN IS NOT A TOY.

Misuse or careless use of this gun can cause serious bodily injury, blindness or death.

READ the owner's manual, warnings and instructions COMPLETELY before using gun. This is intended for use by people age 18 and older only.

- Observe all laws affecting airguns and paintguns.
- Always wear proper eye and face protection when shooting.
- Never point gun at anyone not wearing proper eye and face protection.
- Remove power source and paintballs before disassembly, transport and storage of gun.
- Never look directly into barrel of gun when gun has power source attached and/or paintballs in gun.
- Use CO2 as a power source. This gun is not designed or intended for use with any other type of compressed gas.
- Keep body away from escaping CO2 gas when installing or removing power source to avoid possible frostbite.
- For use only with .68 caliber gelatin-capsule paintballs. Never load or shoot any other object in this gun.
- Insert barrel plug securely in barrel when not shooting.
- When playing paintball, avoid point-blank (within 3 feet) shooting of another player. Avoid shooting at the unprotected head, neck, groin and skin.
- Never play without proper eye and face protection or when all others in shooting area do not have proper eye and face protection Always play in a safe and sportsman-like manner.

General Components



Safety features

Your Titan has three safety features to protect you and others from accidental discharge.

Safety pin on handle

On the side of the handle marked PUSH SAFE, push the pin all the way. This will prevent the trigger from engaging with the sear.

Uncock the gun

To uncock, hold the cocking knob and pull the trigger. Allow the hammer to go forward slowly. Note that if a paintball was in the breach it will have entered the barrel.

Power feed plug

Turn the plug so that the longer part covers the breach of the gun. This will prevent the paintballs from entering the barrel.

Disassembly

- 1) Remove any gas source to the gun.
- 2) Unscrew back end nut assembly.
- 3) Pull out hammer spring.
- 4) Remove the link cover plate by pulling on the tab.
- 5) Turn the gun over and the link will fall out.
- 6) Using the link push the hammer out through the back of the gun.
- 7) Insert the link between the bolt and the valve and push the bolt out through the front of the gun.
- 8) Using a long screwdriver or dowel rod push the valve out through the back of the gun.

Assembly

- 1) Insert the valve from the rear of the gun. While pushing on the valve pull the trigger to let it pass over the sear.
- 2) Using a long screwdriver or dowel rod push the valve in as far as it will go.
- 3) Insert the hammer. While pushing on the hammer, pull the trigger to let it pass over the sear.
- 4) Insert the bolt from the front of the gun. Rotate it until the hole is visible in the slot of the receiver.
- 5) Insert the cocking knob in the hammer.
- 6) Put one end of the link in the bolt. Align the hole in the hammer using the cocking knob and insert the link into the hammer.
- 7) Slide the link cover and push it all the way in.
- 8) Notice the pin in front of the hammer spring and insert this end into the hammer.
- 9) Turn the cocking knob while pushing on the hammer spring. It will lock into place once the pin has engaged with the cocking knob.
- 10) Screw in the back-end assembly and tighten firmly.
- 11) Insert the barrel and tighten until it stops.

Valve disassembly

Hold the valve firmly in one hand or in a vise.
Using a suitable screwdriver, unscrew the brass nut.
Pull out the valve assembly.

Velocity adjustment

The velocity is adjusted by changing the spring tension on the hammer. Turn the adjusting screw anti-clockwise to decrease and clockwise to increase the velocity. *Always check the velocity with a chronograph and do not exceed 300 fps.*

Anti-double feeding mechanism.

Your Titan has a ball detent system that allows only one ball to enter the breach. The ball and spring are contained in a screw in the front of the gun just above the vertical gas port. The o-ring prevents the screw from loosening during use. Remove it using a suitable flat screwdriver. To install, hand tighten until it is snug and then tighten 1/8 turn with a screwdriver.

Tightening too much will cause the body of the detent to enter the breach and interrupt the operation of the gun.

Troubleshooting

Leaking down the barrel

Possible causes:

- Defective O-ring on valve stem.
- Defective valve cup seal.
- Debris inside valve.
- Damaged outside o-ring of valve body.

Solution:

- Remove valve and inspect front outer o-ring.
- Disassemble valve and look for any debris stuck on the cup seal.
- Inspect cup seal and small o-ring. Replace if necessary.

Leaking between hammer and valve

Possible causes:

- Failure of cup seal.
- Damaged buna o-ring in valve.

Solution:

- Remove valve and inspect rear outer o-ring.
- Disassemble valve and inspect black buna o-ring underneath brass nut.

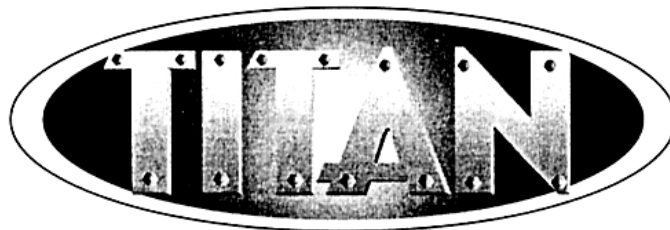
Double cycling/ beating down/ not recocking

Possible causes:

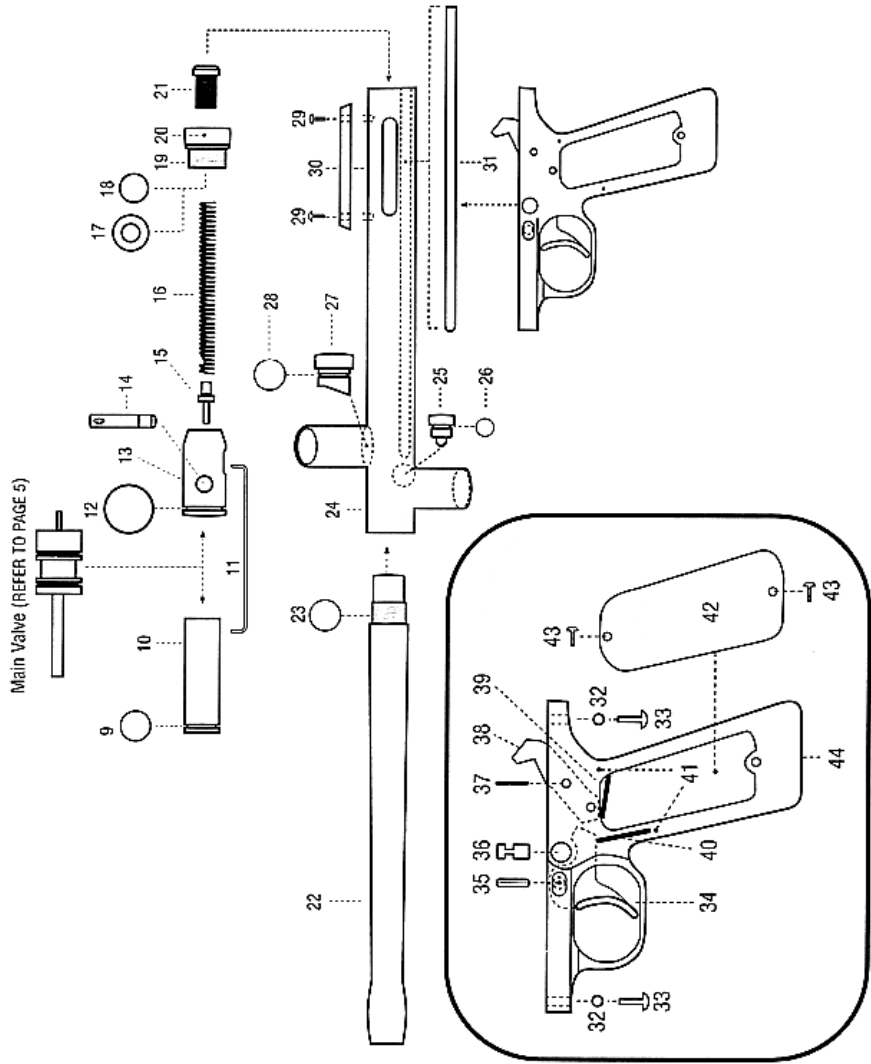
- Debris inside gun.
- Hammer spring tension is not enough.
- Damaged u-cup seal on hammer.

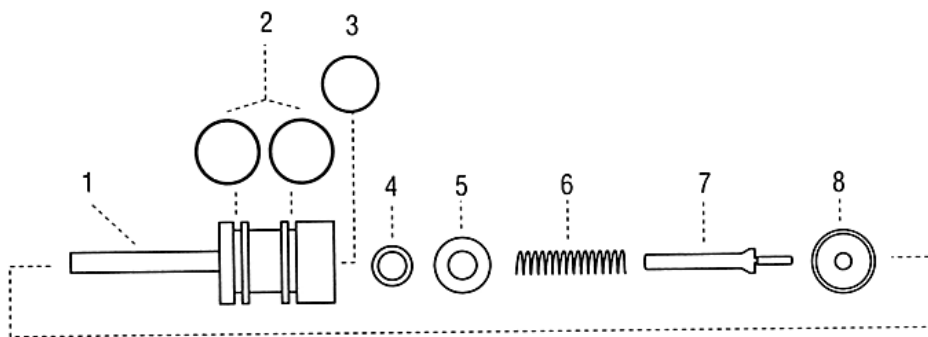
Solution:

- Disassemble gun and clean the bore of the gun with a large squeegee.
- Put a few drops of light gun oil on hammer and bolt when assembling.
- Increase tension on hammer spring by turning adjusting screw clockwise.
- Inspect hammer spring for possible damage.
- Remove hammer and inspect u-cup seal. Replace if necessary.



- 9) Bolt O-Ring
- 10) Bolt
- 11) Linkage Arm
- 12) U-Cup Seal
- 13) Hammer
- 14) Cocking Handle Retention Pin
- 15) Cocking Handle
- 16) Hammer Spring
- 17) Rear Bumper Washer
- 18) Endcap O-Ring
- 19) Endcap
- 20) Velocity Adjuster Set Screw
- 21) Velocity Adjusting Screw
- 22) Barrel
- 23) Barrel O-Ring
- 24) Receiver
- 25) Ball Detent
- 26) Ball Detent O-Ring
- 27) Power Feed Plug
- 28) Power Feed O-Ring
- 29) Sight Rail Screws
- 30) Sight Rail
- 31) Linkage Arm Cover
- 32) Washer
- 33) Grip Frame Screw
- 34) Trigger
- 35) Trigger Spring Pin
- 36) Safety
- 37) Sear Pin
- 38) Sear
- 39) Sear Spring
- 40) Trigger Spring
- 41) Trigger & Sear Spring Roll Pin
- 42) Handle Grip Cover
- 43) Grip Screws
- 44) Grip Frame





- | | |
|---------------------------------------|-------------------------|
| 1) Valve Body | 5) Valve Washer |
| 2) 114 Urethane
Outer Valve O-Ring | 6) Valve Spring |
| 3) 15mm x 1.5mm Buna
O-Ring | 7) Valve Stem |
| 4) 009 Urethane O-Ring | 8) Valve Cup Seal/Screw |