



LCD

USER MANUAL

aintballTeam.com

[WARNING]
This is not a toy. Misuse of this product may cause serious injury or death. All persons using this product, or within range while this product is being used, must wear eye protection specifically designed for paintball. Recommend at least 18 years of age to purchase this product. Please read operation/instruction manual before using.

LCD

WARRANTY INFORMATION

Warranties to the original customer that this product is free from defects in material and workmanship under normal use and service for a period of one year from the original date of purchase by the initial owner/purchaser. For warranty to be effective, customer must return the enclosed warranty registration card, along with a copy of the purchase receipt, within fifteen days of purchase. The manufacturer agrees to repair or replace (at its discretion) any product within a reasonable period of time. This warranty does not cover: o-rings, scratches, nicks, normal wear and tear of parts, any modifications or normal fading of anodizing or damage caused by dropping or hitting of the product. This warranty shall not apply if it is shown by the manufacturer that the consumer caused the defect or malfunction because of misuse. This warranty only covers original factory parts. Any modifications or tampering of original factory parts will not be covered by this warranty. Warranty work can only be conducted by the manufacture technicians and or authorized technicians. If product needs to be repair, package it carefully and send it together with your name, address, phone number and a brief description of the malfunction to:

Silver Bullet Repair
570 Mantua Blvd. Sewell, NJ 08080

USER MANUAL

CAUTION:

- This paintball marker is NOT a toy. It can cause injury or death.
- Install a barrel plug in the barrel when not using the marker.
- All persons using this product, within range while this product is being used, must wear eye and face protection specifically designed for paintball.
- Fire only 0.68 caliber paintballs from this product.
- Read this manual before using this product.

IMPORTANT:

- Firing velocity may vary according to altitude and climate conditions.
- BEFORE using your marker in play, you must first perform a SAFE VELOCITY TEST.
(This can only be accomplished by using a testing device called a "Velocity Chronograph" and can be performed by the dealership where you purchased this product or at a local paintball playing field).
- Recommended velocity is 280 (FPS) or less.
- This Product is NOT intended to be used at any distance less than 25 feet.

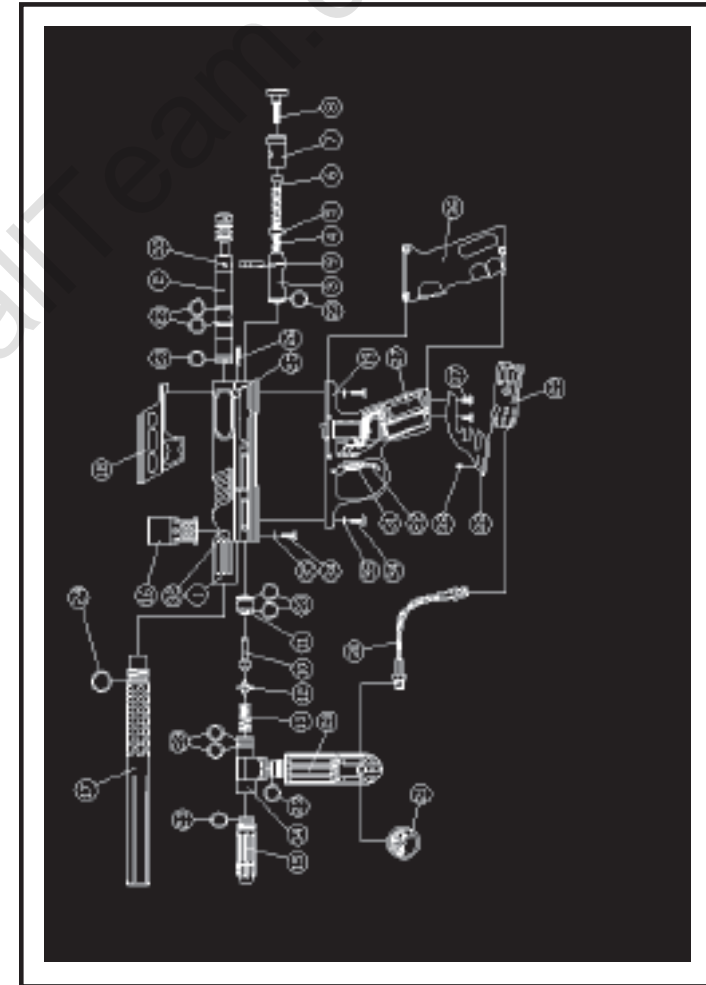
NOTE:

This product is intended to be used at a velocity no higher than 300 feet per second (FPS).

LCD

OPERATION GUIDE

1. Main Body	14. Volumizer	28. Drop-Forward
2. Venturi Bolt	15. Low Pressure Chamber	29. Adapter UFA
3. Hammer	16. Direct Feed	30. Disconnect Hose
4. Striker Spring	17. Barrel	31. Touch Switch
5. Striker Buffer	18. Sight Rail	32. Ball Detent
6. Striker Spring Guide	20. Expansion Chamber	33. Bolt Screw
7. Hammer Plug	21. Gauge	34. No.10-14x1/2" Screw
8. Thumb Adjuster	22. Double Trigger	35. C.S. Washer
9. Bolt Pin	23. O-ring A-015	36. Gel Grip
10. Cup Seal & Valve Pin	24. Barrel O-ring	37. M5X12 Screw
11. Valve Body	25. Quick Disconnect Pin	38. M5X5 Screw
12. Cup Seal Guide	26. Disconnect Lock Pin	
13. Valve Spring	27. LCD/LED Elec.Board	

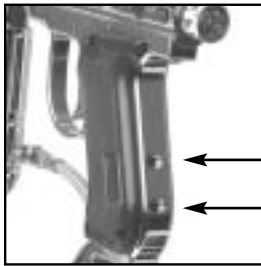


LCD

Basic Operation:

Button 1) Power button: Press and hold until screen turns on to power marker. When the marker is not in use it is suggested to turn the marker off. To turn the marker off press and hold button 1 until the screen powers off.

Button 2) Cycles through firing modes: Semi, Multi, Turbo and Full Auto. To select fire mode: with the safety off press this button until the mode you wish to use appears on screen. This button is also used to turn the electronic safety on and off.



← → BUTTON 1

← → BUTTON 2

This Grip has 4 firing options:

Semi Auto: One shot per trigger pull, adjustable from four to twenty balls per second.

Multi: Multiple shots per trigger pull. The number of shots per trigger pull is adjustable from one to twenty balls per trigger pull.

Turbo: Same as Multi but the number of balls per second is increased, adjustable from four to twenty balls per trigger pull.

Full Auto: Continuous firing per trigger pull, the number of balls per second is adjustable from four to twenty balls per second.

Rate of Fire Adjustment:

- 1) Select the firing mode you wish to adjust.
- 2) Press and release button one.
- 3) Press button two to change the rate of fire
- 4) Press button one to save.

Shot Counter Reset:

- 1) Press button one two times, the screen will read "Counter"
- 2) Press button two, the number of balls fired will now be flashing.
- 3) Press button two, to reset the counter.

Game Timer:

- 1) Press button one three times, the screen will read "Timer"
- 2) Press button two, the timer will now be flashing.
- 3) Press button two to adjust the countdown timer. Adjustable from 0 to 99 minutes. Select 0 to cancel.
- 4) Press button one to start timer and return to the firing menu.

Auto shutoff options:

- 1) Press button one four times, the screen will now read "Power"
- 2) Press button two, the bottom half of the screen will be flashing the current setting.
- 3) Press button two, to cycle the power setting options.
"Autooff" The marker will shutoff after a period of inactivity, helping to conserve power.
"Normal" The marker will NOT automatically shutoff.
- 4) Press button one to save.

Safety Operation:

With safety on press and hold button two until the word "Safety" disappears from the screen. To turn safety on repeat until "safety" appears on the screen.

Operation Guide:

Before you play.

- 1) Power button: Press and hold until screen turns on to power marker.
Caution: With the power on the marker is capable of firing.
- 2) Cock the marker by pulling the venturi bolt to the rear of the marker until it latches. Caution: Releasing the bolt before it latches may cause the marker to fire.
- 3) Tighten the air tank until it is snug. If a leak occurs between the tank and C/A adapter, replace the tank o-ring.
- 4) Install the loader into the feed tube. Fill the loader with .68 caliber paintballs only.
- 5) Turn electronic safety off and select fire mode. Refer to basic operation for instructions.
- 6) Pull trigger to fire.

After you play

- 1) Remove your loader and paint from marker.
- 2) Aim the marker in a safe direction and fire a few shots to empty paintballs from the breach.
- 3) Simultaneously unscrew your tank and fire the marker in a safe direction. Firing will release line pressure and prevent o-ring breakage. Caution: do not unscrew the tank valve from the tank; doing so may cause serious injury or death.
- 4) Turn the marker off and insert a barrel plug into the marker.

LCD

Maintenance:

- 1) To properly maintain your marker, you will need to disassemble your marker. (note how parts are removed from the marker to ease reassembly). Remove the disconnect pin using caution as internal parts are spring loaded. Pull the venturi cocking bolt out the back of the marker. The striker will also be removed.
- 2) Clean any paint or dirt from the bolt and inside of the marker using a clean rag or squeegee.
- 3) Lubricate the bolt and striker using a few drops of paintball oil, spread evenly with your finger.
- 4) Reassemble the marker. Note: when putting the venturi bolt and striker back into the marker, you will need to apply pressure to the venturi bolt while pushing the sear out of the way. To do this remove the grip cover and push the movable part of the solenoid forward. Note in some cases it may be necessary to push directly on the sear. This will allow the bolt and striker to be properly installed in the marker.

GENERAL INFORMATION

It is recommended that you install a new battery to ensure the maximum capacity. If you leave the battery unused for over a week install a new battery.

General Maintenance

- (1) Use the compressed air to clean the coil set to keep it's best performance after every use.
Cleaning should only be performed on the exterior of the marker. Never submerge the frame in any type of liquid for any reason. The electronics may become damaged or destroyed. Keep water or cleaning solutions from entering the inside of the frame. Solvents should not be used to clean any part of the frame.
- (2) Always use the appropriate tool to remove screws and other components of the frame.
- (3) Do not dry fire.
- (4) Only use paintball lubes or grease.

Trouble Shooting

I. One or more of the following may cause recocking related problems.

- A. The pressure in the tank is too low or too high.
- B. Need lubrication. (See the Operation Guide)
- C. Striker o-ring is damaged. Replace with a new o-ring.
- D. Need to clean barrel and upper chamber of the receiver.
- E. Paintballs may be defective. (i.e. expired, change shape)
- F. Bolt o-ring is damaged or the o-ring has expanded or swelled. Replace with a new o-ring.
- G. After ball breaks, remove all parts from the upper chamber of the receiver, wipe parts clean, and reassemble parts into the receiver. Also make sure to clean the barrel with a squeegee.

Helpful Hints:

II. Always remove air tank before any disassembly of your marker.

DO NOT remove the valve body unless specific valve body repairs are needed.

If needed, remove the valve body with a long, soft tipped object such as an eraser end of a pencil. DO NOT remove the valve body with a screw driver as it will damage the valve body and cause air leaks.

•Air leaks are usually caused by a damaged valve body or damaged cup seal. Replace with a new valve body and/or cup seal if necessary.

•To assure gun is assembled properly, follow the schematic drawing or place parts in order during disassembly. Parts assembled backwards or placed in the wrong order will cause major to malfunction.

Electronic Grip Troubleshooting:

III. Electronic Grip

- A. Check to make sure there is enough air pressure to fire the marker
- B. Battery may need to be replaced
- C. Specific troubleshooting questions may be answered by e-mailing (tech@nationalpaintball.com)
- D. Velocity may be too high, lower to below 280 fps

LCD

Subscription Page Name

Your Email Address Name

Mail Post Shipping/Postage Fee

Invoice/Receipt Page Name

Mail Postage Shipping/Postage Fee

WARRANTY REGISTRATION

Please complete and return this form, along with a copy of your purchase receipt, within fifteen days of purchase so that we may validate your one year limited warranty.

Mail to: Silver Bullet
570 Mantua Blvd.
Sewell, NJ 08080

Serial Number _____

Name _____

Telephone _____

Address _____

City _____ State _____ Zip _____ Country _____

Your Age _____ E-mail Address _____

Occupation _____

Product name and Model _____

What other brand(s) of markers do you own? _____

Why did you purchase this marker? _____

Avg# or times you play paintball per month _____

What other hobbies (other than paintball)? _____

What are some magazines you like to read? _____

Have you purchased products from the internet? _____

What website? _____



www.WolfpackPaintballTeam.com