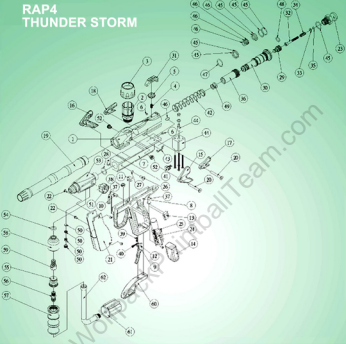


RAP4 THUNDER STORM



No.	Description	Part No	Qty.	No.	Description	Part No	Qty.	No.	Description	Part No	Qty.
1	Paintball Marker Body	103-001	1	32	Screw M3 x 6	103-083	4	43	Special O-ring	103-010	1
2	Feed Port Collar	103-101	1	33	Bolt End	103-198	1	44	Solenoid Assembly	103-016	1
3	Feed Port Locking Screw	103-102	1	34	Main PCB	103-208	1	46	O-ring (17.17 x 1.78)	103-086	6
4	Allen Screw M5	103-051	1	35	Screw M3	103-054	2	48	O-ring (11.0 - 1.5)	103-086	5
5	Bolt Assembly Locking Screw	103-103	1	36	Round Head Screw, M5	103-055	1	47	O-ring (11.0 - 2.2)	103-087	1
6	O-ring (2.78 x 1.58)	103-001	2	37	O-ring (2.5 - 1.8)	103-082	1	48	O-ring (9.8 x 1.8)	103-086	1
7	Paintball Marker Base	103-111	1	38	O-ring (15.0 - 1.78)	103-083	1	49	Rubber Cushion	103-011	1
8	Handle (Back)	103-321	1	39	Platen	103-239	1	60	Pressure Relief Valve Assembly	103-017	1
9	Trigger	103-201	1	40	Diffuser	103-489	1	61	Pressure Gauge	103-019	1
10	On-Off Switch	103-002	1	41	Timing Point	103-110	1	62	Ball Detent	103-018	2
11	Slide Switch	103-203	1	42	Velocity Adjusting Screw	103-086	1	63	Second Stage Regulator	103-041	1
12	Trigger Pin	103-204	1	43	Brass Ring	103-210	1	64	O-ring (10.7 x 2.5)	103-086	1
13	Trigger Mass Switch	103-205	1	44	Velocity Adjusting Spring	103-211	1	65	Handle Locking Screw	103-220	1
14	9V Battery	103-006	1	45	O-ring (4.8 - 1.8)	103-084	1	66	Gas Connection	103-021	1
15	Paintball Detector Assembly (Left)	103-104	1	46	Ball	103-111	1	67	Handle (Front, AT)	103-081	1
16	Paintball Detector Assembly (Right)	103-105	1	47	Screw M5 x 18	103-057	2	68	Handle Support	103-081	1
17	Back Cover (Left)	103-108	1	48	Spring Seat	103-212	1	69	Handle Support Capscrew	103-089	1
18	Back Cover (Right)	103-107	1	49	Trigger Spring	103-213	1	80	Gun Supporting Frame	103-032	1
19	Paintball Marked Barrel, 12 inch	10-4112	1	40	Trigger Allen Screw	103-058	1	81	Cylinder Supporting Frame	103-033	1
20	Countersink Screw M5	103-052	2	41	Paintball Detector Connection	103-214	1	82	Hex Connection	103-034	1
21	Rubber Cover	103-207	1	42	Bolt Spring	103-215	1				