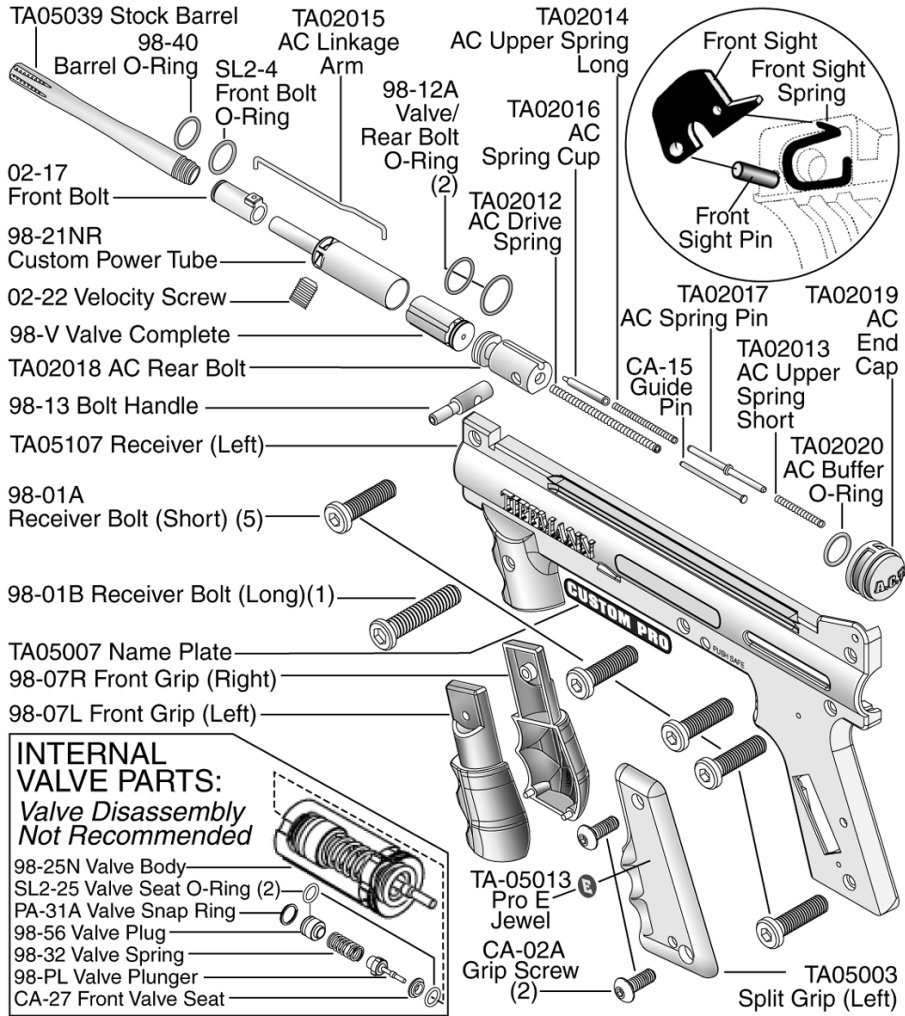
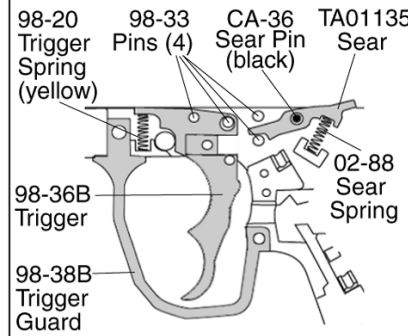
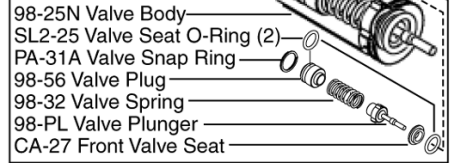


# TIPPMANN® 98 CUSTOM PRO WITH E-TRIGGER™ PARTS LIST



### INTERNAL VALVE PARTS: Valve Disassembly Not Recommended



### TRIGGER ASSEMBLY

- 1) Place 4 pins and 1 black sear pin into locations as shown.
- 2) Then place the trigger and sear onto pins as shown.
- 3) Insert sear spring as shown.
- 4) Insert trigger spring (yellow) as shown.

## ⚠ WARNING

**DO NOT DISASSEMBLE THIS MARKER WHILE IT IS PRESSURIZED WITH AIR. DO NOT PRESSURIZE A PARTIALLY ASSEMBLED MARKER.**

